

Cennik obowiązuje od
dnia 09.01.2023








alfa
Ryszard Kroszel



Strona internetowa: www.alfark.pl
Adres do zamówień: beta@alfark.pl
Temp. pracy: 20°C
Ciśnienie pracy: 10 bar (1,0 MPa)

ZŁĄCZKI I OBEJMY PP PN10

| 2022//04 | AL10 | ↓ Kurs Euro 4,30 obowiązuje w przedziale 4,30 - 4,39 dla NBP | | | | | | |
|-------------|------------|--------------------------------------------------------------|--------------|---------------|-------|----------|----------|---------------------------------------------------------------------------------------|
| Art. Nr | Index | Rozmiar | Cena € netto | Cena zł netto | Rabat | Opak. A | Opak. B | PN10 |
| | | | | 4,30 | 0% | | | |
| A610 | 610 | złączka pe PN10 | | | | A | B | |
| A610 | 661020 | 20 x 20 | 1,16 | 4,99 | 4,99 | 20 | 280 |  |
| A610 | 661025 | 25 x 25 | 1,40 | 6,02 | 6,02 | 10 | 220 | |
| A610 | 661032 | 32 x 32 | 1,80 | 7,74 | 7,74 | 10 | 120 | |
| A610 | 661040 | 40 x 40 | 3,04 | 13,07 | 13,07 | | 90 | |
| A610 | 661050 | 50 x 50 | 4,23 | 18,19 | 18,19 | | 60 | |
| A610 | 661063 | 63 x 63 | 6,06 | 26,06 | 26,06 | | 32 | |
| A611 | 611 | złączka pe redukcyjna PN10 | | | | A | B | |
| A611 | 661125 | 25 x 20 | 1,40 | 6,02 | 6,02 | 20 | 300 |  |
| A611 | 661131 | 32 x 20 | 1,76 | 7,57 | 7,57 | 10 | 200 | |
| A611 | 661132 | 32 x 25 | 1,76 | 7,57 | 7,57 | 15 | 180 | |
| A611 | 661139 | 40 x 25 | 3,01 | 12,94 | 12,94 | | 95 | |
| A611 | 661140 | 40 x 32 | 3,01 | 12,94 | 12,94 | | 95 | |
| A611 | 661150 | 50 x 40 | 4,31 | 18,53 | 18,53 | | 70 | |
| A611 | 661163 | 63 x 50 | 5,92 | 25,46 | 25,46 | | 35 | |
| A615 | 615 | złączka pe-gz PN10 | | | | A | B | |
| A615 | 661520 | 20 x 1/2" | 0,65 | 2,80 | 2,80 | 20 | 600 |  |
| A615 | 661521 | 20 x 3/4" | 0,65 | 2,80 | 2,80 | 20 | 600 | |
| A615 | 661524 | 25 x 1/2" | 0,74 | 3,18 | 3,18 | 20 | 340 | |
| A615 | 661525 | 25 x 3/4" | 0,74 | 3,18 | 3,18 | 20 | 340 | |
| A615 | 661526 | 25 x 1" | 0,74 | 3,18 | 3,18 | 20 | 320 | |
| A615 | 661530 | 32 x 1/2" | 0,97 | 4,17 | 4,17 | 10 | 200 | |
| A615 | 661531 | 32 x 3/4" | 0,97 | 4,17 | 4,17 | 10 | 200 | |
| A615 | 661532 | 32 x 1" | 0,97 | 4,17 | 4,17 | 10 | 200 | |
| A615 | 661533 | 32 x 5/4" | 1,20 | 5,16 | 5,16 | 10 | 200 | |
| A615 | 661534 | 32 x 6/4" | 1,20 | 5,16 | 5,16 | 20 | 180 | |
| A615 | 661539 | 40 x 1" | 1,86 | 8,00 | 8,00 | | 120 | |
| A615 | 661540 | 40 x 5/4" | 1,86 | 8,00 | 8,00 | | 120 | |
| A615 | 661541 | 40 x 6/4" | 1,86 | 8,00 | 8,00 | | 120 | |
| A615 | 661542 | 40 x 2" | 1,86 | 8,00 | 8,00 | | 120 | |
| A615 | 661550 | 50 x 6/4" | 2,54 | 10,92 | 10,92 | | 100 | |
| A615 | 661551 | 50 x 2" | 2,54 | 10,92 | 10,92 | | 90 | |
| A615 | 661563 | 63 x 2" | 3,46 | 14,88 | 14,88 | | 50 | |
| A616 | 616 | złączka pe-gw PN10 | | | | A | B | |
| A616 | 661620 | 20 x 1/2" | 0,77 | 3,31 | 3,31 | 20 | 500 |  |
| A616 | 661621 | 20 x 3/4" | 0,77 | 3,31 | 3,31 | 20 | 500 | |
| A616 | 661624 | 25 x 1/2" | 0,90 | 3,87 | 3,87 | 20 | 380 | |
| A616 | 661625 | 25 x 3/4" | 0,90 | 3,87 | 3,87 | 20 | 380 | |
| A616 | 661626 | 25 x 1" | 0,90 | 3,87 | 3,87 | 20 | 380 | |
| A616 | 661630 | 32 x 1/2" | 1,14 | 4,90 | 4,90 | 10 | 220 | |
| A616 | 661631 | 32 x 3/4" | 1,14 | 4,90 | 4,90 | 10 | 220 | |
| A616 | 661632 | 32 x 1" | 1,14 | 4,90 | 4,90 | 10 | 150 | |
| A616 | 661639 | 40 x 1" | 1,85 | 7,96 | 7,96 | | 120 | |
| A616 | 661640 | 40 x 5/4" | 1,85 | 7,96 | 7,96 | | 120 | |
| A616 | 661641 | 40 x 6/4" | 1,85 | 7,96 | 7,96 | | 120 | |
| A616 | 661650 | 50 x 6/4" | 2,82 | 12,13 | 12,13 | | 80 | |
| A616 | 661651 | 50 x 2" | 2,82 | 12,13 | 12,13 | | 80 | |
| A616 | 661663 | 63 x 2" | 4,02 | 17,29 | 17,29 | | 50 | |
| A620 | 620 | kolano pe PN10 | | | | A | B | |
| A620 | 662020 | 20 x 20 | 1,22 | 5,25 | 5,25 | 20 | 240 |  |
| A620 | 662025 | 25 x 25 | 1,48 | 6,36 | 6,36 | 10 | 200 | |
| A620 | 662032 | 32 x 32 | 1,87 | 8,04 | 8,04 | 5 | 100 | |
| A620 | 662040 | 40 x 40 | 3,20 | 13,76 | 13,76 | | 80 | |
| A620 | 662050 | 50 x 50 | 4,64 | 19,95 | 19,95 | | 45 | |
| A620 | 662063 | 63 x 63 | 6,01 | 25,84 | 25,84 | | 30 | |

| Art. Nr | Index | Rozmiar | Cena € netto | Cena zł netto | Rabat | Opak. A | Opak. B | PN10 |
|---------|-------|---------|--------------|---------------|-------|---------|---------|------|
|---------|-------|---------|--------------|---------------|-------|---------|---------|------|

A625 625 kolano pe-gz PN10

| | | | | | | A | B |
|------|--------|-----------|------|-------|-------|----|-----|
| A625 | 662520 | 20 x 1/2" | 0,83 | 3,57 | 3,57 | 20 | 500 |
| A625 | 662521 | 20 x 3/4" | 0,83 | 3,57 | 3,57 | 20 | 500 |
| A625 | 662524 | 25 x 1/2" | 1,01 | 4,34 | 4,34 | 20 | 280 |
| A625 | 662525 | 25 x 3/4" | 1,01 | 4,34 | 4,34 | 20 | 280 |
| A625 | 662526 | 25 x 1" | 1,01 | 4,34 | 4,34 | 20 | 240 |
| A625 | 662531 | 32 x 3/4" | 1,27 | 5,46 | 5,46 | 20 | 180 |
| A625 | 662532 | 32 x 1" | 1,27 | 5,46 | 5,46 | 20 | 180 |
| A625 | 662540 | 40 x 5/4" | 2,10 | 9,03 | 9,03 | | 110 |
| A625 | 662550 | 50 x 6/4" | 3,09 | 13,29 | 13,29 | | 75 |
| A625 | 662563 | 63 x 2" | 4,16 | 17,89 | 17,89 | | 40 |



A626 626 kolano pe-gw PN10

| | | | | | | A | B |
|------|--------|-----------|------|-------|-------|----|-----|
| A626 | 662620 | 20 x 1/2" | 0,92 | 3,96 | 3,96 | 20 | 360 |
| A626 | 662621 | 20 x 3/4" | 0,92 | 3,96 | 3,96 | 20 | 360 |
| A626 | 662624 | 25 x 1/2" | 1,15 | 4,95 | 4,95 | 20 | 320 |
| A626 | 662625 | 25 x 3/4" | 1,15 | 4,95 | 4,95 | 20 | 320 |
| A626 | 662626 | 25 x 1" | 1,15 | 4,95 | 4,95 | 20 | 200 |
| A626 | 662631 | 32 x 3/4" | 1,34 | 5,76 | 5,76 | 10 | 170 |
| A626 | 662632 | 32 x 1" | 1,34 | 5,76 | 5,76 | 10 | 170 |
| A626 | 662640 | 40 x 5/4" | 2,64 | 11,35 | 11,35 | | 90 |
| A626 | 662650 | 50 x 6/4" | 3,96 | 17,03 | 17,03 | | 70 |
| A626 | 662663 | 63 x 2" | 5,29 | 22,75 | 22,75 | | 40 |



A630 630 trójnik pe PN10

| | | | | | | A | B |
|------|--------|--------------|------|-------|-------|----|-----|
| A630 | 663020 | 20 x 20 x 20 | 1,53 | 6,58 | 6,58 | 10 | 160 |
| A630 | 663025 | 25 x 25 x 25 | 2,06 | 8,86 | 8,86 | 10 | 120 |
| A630 | 663032 | 32 x 32 x 32 | 2,62 | 11,27 | 11,27 | | 75 |
| A630 | 663040 | 40 x 40 x 40 | 4,51 | 19,39 | 19,39 | | 50 |
| A630 | 663050 | 50 x 50 x 50 | 6,54 | 28,12 | 28,12 | | 35 |
| A630 | 663063 | 63 x 63 x 63 | 9,53 | 40,98 | 40,98 | | 16 |



A631 631 trójnik pe redukcyjny PN10

| | | | | | | A | B |
|------|--------|--------------|------|-------|-------|----|-----|
| A631 | 663125 | 25 x 20 x 25 | 2,05 | 8,82 | 8,82 | 10 | 120 |
| A631 | 663132 | 32 x 25 x 32 | 2,60 | 11,18 | 11,18 | | 80 |
| A631 | 663140 | 40 x 32 x 40 | 4,44 | 19,09 | 19,09 | | 40 |
| A631 | 663150 | 50 x 40 x 50 | 6,28 | 27,00 | 27,00 | | 35 |
| A631 | 663163 | 63 x 50 x 63 | 8,77 | 37,71 | 37,71 | | 20 |



A635 635 trójnik pe-gz-pe PN10

| | | | | | | A | B |
|------|--------|----------------|------|-------|-------|----|-----|
| A635 | 663520 | 20 x 1/2" x 20 | 1,31 | 5,63 | 5,63 | 20 | 220 |
| A635 | 663521 | 20 x 3/4" x 20 | 1,31 | 5,63 | 5,63 | 20 | 220 |
| A635 | 663524 | 25 x 1/2" x 25 | 1,72 | 7,40 | 7,40 | 10 | 160 |
| A635 | 663525 | 25 x 3/4" x 25 | 1,72 | 7,40 | 7,40 | 10 | 160 |
| A635 | 663526 | 25 x 1" x 25 | 1,72 | 7,40 | 7,40 | | 160 |
| A635 | 663531 | 32 x 3/4" x 32 | 2,21 | 9,50 | 9,50 | | 100 |
| A635 | 663532 | 32 x 1" x 32 | 2,21 | 9,50 | 9,50 | | 100 |
| A635 | 663540 | 40 x 5/4" x 40 | 3,79 | 16,30 | 16,30 | | 60 |
| A635 | 663550 | 50 x 6/4" x 50 | 5,50 | 23,65 | 23,65 | | 40 |
| A635 | 663563 | 63 x 2" x 63 | 9,20 | 39,56 | 39,56 | | 20 |



A636 636 trójnik pe-gw-pe PN10

| | | | | | | A | B |
|------|--------|----------------|------|-------|-------|----|-----|
| A636 | 663620 | 20 x 1/2" x 20 | 1,30 | 5,59 | 5,59 | 20 | 220 |
| A636 | 663621 | 20 x 3/4" x 20 | 1,30 | 5,59 | 5,59 | 20 | 220 |
| A636 | 663624 | 25 x 1/2" x 25 | 1,58 | 6,79 | 6,79 | 10 | 160 |
| A636 | 663625 | 25 x 3/4" x 25 | 1,58 | 6,79 | 6,79 | 10 | 160 |
| A636 | 663631 | 32 x 3/4" x 32 | 2,09 | 8,99 | 8,99 | | 100 |
| A636 | 663632 | 32 x 1" x 32 | 2,09 | 8,99 | 8,99 | 5 | 100 |
| A636 | 663640 | 40 x 5/4" x 40 | 4,00 | 17,20 | 17,20 | | 60 |
| A636 | 663650 | 50 x 6/4" x 50 | 5,82 | 25,03 | 25,03 | | 40 |
| A636 | 663663 | 63 x 2" x 63 | 9,03 | 38,83 | 38,83 | | 20 |



| Art. Nr | Index | Rozmiar | Cena € netto | Cena zł netto | Rabat | Opak. A | Opak. B | PN10 |
|---------|-------|---------|--------------|---------------|-------|---------|---------|------|
|---------|-------|---------|--------------|---------------|-------|---------|---------|------|

| A640 | | 640 | korek - zaślepka PN10 | | | A | B |
|------|--------|-----|-----------------------|-------|-------|----|-----|
| A640 | 664020 | 20 | 0,77 | 3,31 | 3,31 | 20 | 500 |
| A640 | 664025 | 25 | 0,94 | 4,04 | 4,04 | 20 | 360 |
| A640 | 664032 | 32 | 1,16 | 4,99 | 4,99 | 20 | 220 |
| A640 | 664040 | 40 | 1,89 | 8,13 | 8,13 | | 150 |
| A640 | 664050 | 50 | 2,92 | 12,56 | 12,56 | | 100 |
| A640 | 664063 | 63 | 3,88 | 16,68 | 16,68 | | 50 |



| A527 | | kolano pe-gw-pe | | | A | B | |
|------|--------|-----------------|------|-------|-------|---|-----|
| A527 | 652724 | 25 x 25 x 1/2" | 2,51 | 10,79 | 10,79 | | 160 |
| A527 | 652730 | 32 x 32 x 1/2" | 3,13 | 13,46 | 13,46 | | 100 |
| A527 | 652731 | 32 x 32 x 3/4" | 3,13 | 13,46 | 13,46 | | 100 |



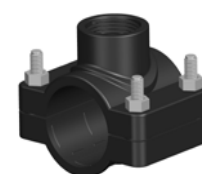
| A528 | | kolano pe-gw do zamocowania (ścienne) | | | A | B | |
|------|--------|---------------------------------------|------|-------|-------|---|-----|
| A528 | 652820 | 20 x 1/2" | 2,56 | 11,01 | 11,01 | | 240 |
| A528 | 652825 | 25 x 3/4" | 3,06 | 13,16 | 13,16 | | 140 |



| A550 | | 550 | Obejmy PN 10 | | | śruby | Opak. B |
|------|--------|-----------|--------------|------|------|-------|---------|
| A550 | 665011 | 20 x 1/2" | 0,78 | 3,35 | 3,35 | 2 | 400 |
| A550 | 665021 | 25 x 1/2" | 0,70 | 3,01 | 3,01 | 2 | 300 |
| A550 | 665022 | 25 x 3/4" | 0,70 | 3,01 | 3,01 | 2 | 300 |
| A550 | 665031 | 32 x 1/2" | 0,91 | 3,91 | 3,91 | 2 | 270 |
| A550 | 665032 | 32 x 3/4" | 0,91 | 3,91 | 3,91 | 2 | 270 |
| A550 | 665041 | 40 x 1/2" | 1,05 | 4,52 | 4,52 | 2 | 180 |
| A550 | 665042 | 40 x 3/4" | 1,05 | 4,52 | 4,52 | 2 | 180 |
| A550 | 665043 | 40 x 1" | 1,05 | 4,52 | 4,52 | 2 | 150 |
| A550 | 665051 | 50 x 1/2" | 1,10 | 4,73 | 4,73 | 2 | 120 |
| A550 | 665052 | 50 x 3/4" | 1,10 | 4,73 | 4,73 | 2 | 120 |
| A550 | 665053 | 50 x 1" | 1,10 | 4,73 | 4,73 | 2 | 100 |
| A550 | 665061 | 63 x 1/2" | 1,52 | 6,54 | 6,54 | 2 | 100 |
| A550 | 665062 | 63 x 3/4" | 1,52 | 6,54 | 6,54 | 2 | 100 |
| A550 | 665063 | 63 x 1" | 1,52 | 6,54 | 6,54 | 2 | 100 |



| Art. Nr | Index | Rozmiar | Cena € netto | Cena zł netto | Rabat | śruby | Opak. B |
|---------|--------|------------------|--------------|---------------|-------|-------|---------|
| A550 | | obejma - 4 śruby | | | | | B |
| A550 | 665151 | 50 x 1/2" | 1,20 | 5,16 | 5,16 | 4 | 100 |
| A550 | 665152 | 50 x 3/4" | 1,20 | 5,16 | 5,16 | 4 | 100 |
| A550 | 665153 | 50 x 1" | 1,20 | 5,16 | 5,16 | 4 | 100 |
| A550 | 665154 | 50 x 5/4" | 1,20 | 5,16 | 5,16 | 4 | 100 |
| A550 | 665161 | 63 x 1/2" | 1,65 | 7,10 | 7,10 | 4 | 80 |
| A550 | 665162 | 63 x 3/4" | 1,65 | 7,10 | 7,10 | 4 | 80 |
| A550 | 665163 | 63 x 1" | 1,65 | 7,10 | 7,10 | 4 | 80 |
| A550 | 665164 | 63 x 5/4" | 1,65 | 7,10 | 7,10 | 4 | 70 |
| A550 | 665165 | 63 x 6/4" | 1,65 | 7,10 | 7,10 | 4 | 70 |
| A550 | 665171 | 75 x 1/2" | 2,36 | 10,15 | 10,15 | 4 | 65 |
| A550 | 665172 | 75 x 3/4" | 2,36 | 10,15 | 10,15 | 4 | 65 |
| A550 | 665173 | 75 x 1" | 2,36 | 10,15 | 10,15 | 4 | 65 |
| A550 | 665174 | 75 x 5/4" | 2,39 | 10,28 | 10,28 | 4 | 60 |
| A550 | 665175 | 75 x 6/4" | 2,39 | 10,28 | 10,28 | 4 | 60 |
| A550 | 665176 | 75 x 2" | 2,43 | 10,45 | 10,45 | 4 | 45 |
| A550 | 665181 | 90 x 1/2" | 2,62 | 11,27 | 11,27 | 4 | 45 |
| A550 | 665182 | 90 x 3/4" | 2,62 | 11,27 | 11,27 | 4 | 40 |
| A550 | 665183 | 90 x 1" | 2,62 | 11,27 | 11,27 | 4 | 40 |
| A550 | 665184 | 90 x 5/4" | 2,62 | 11,27 | 11,27 | 4 | 40 |
| A550 | 665185 | 90 x 6/4" | 2,62 | 11,27 | 11,27 | 4 | 35 |
| A550 | 665186 | 90 x 2" | 2,62 | 11,27 | 11,27 | 4 | 35 |
| A550 | 665191 | 110 x 1/2" | 3,04 | 13,07 | 13,07 | 4 | 30 |
| A550 | 665192 | 110 x 3/4" | 3,04 | 13,07 | 13,07 | 4 | 30 |
| A550 | 665193 | 110 x 1" | 3,04 | 13,07 | 13,07 | 4 | 30 |
| A550 | 665194 | 110 x 5/4" | 3,04 | 13,07 | 13,07 | 4 | 30 |
| A550 | 665195 | 110 x 6/4" | 3,04 | 13,07 | 13,07 | 4 | 30 |
| A550 | 665196 | 110 x 2" | 3,04 | 13,07 | 13,07 | 4 | 25 |



| Art. Nr | Index | Rozmiar | | Cena zł netto bez rabatów i przeliczników |
|---------|-------|---------|--|-------------------------------------------|
|---------|-------|---------|--|-------------------------------------------|

A345 Pierścień dociskowy czarny PN10

| | | | | |
|------|--------|----|--|------|
| A345 | 802001 | 20 | | 1,18 |
| A345 | 802002 | 25 | | 1,35 |
| A345 | 802003 | 32 | | 1,69 |
| A345 | 802004 | 40 | | 2,08 |
| A345 | 802005 | 50 | | 2,70 |
| A345 | 802006 | 63 | | 5,39 |



A384M Nakrętka dociskowa niebieska PN10

| | | | | |
|-------|--------|----|--|------|
| A384M | 802011 | 20 | | 1,35 |
| A384M | 802012 | 25 | | 2,07 |
| A384M | 802013 | 32 | | 2,16 |
| A384M | 802014 | 40 | | 3,81 |
| A384M | 802015 | 50 | | 5,34 |
| A384M | 802016 | 63 | | 8,57 |



A376 Pierścień zaciskowy czarny PN10

| | | | | |
|------|--------|----|--|------|
| A376 | 802021 | 20 | | 0,58 |
| A376 | 802022 | 25 | | 0,63 |
| A376 | 802023 | 32 | | 0,94 |
| A376 | 802024 | 40 | | 1,66 |
| A376 | 802025 | 50 | | 2,16 |
| A376 | 802026 | 63 | | 3,81 |



A342 Uszczelka czarna oring PN10

| | | | | |
|------|--------|----|--|------|
| A342 | 802031 | 20 | | 0,62 |
| A342 | 802032 | 25 | | 0,73 |
| A342 | 802033 | 32 | | 0,73 |
| A342 | 802034 | 40 | | 1,24 |
| A342 | 802035 | 50 | | 1,97 |
| A342 | 802036 | 63 | | 2,25 |

